

# PANCHVATI AVENUE

BY GREENFIELD DEVELOPERS





The image is an architectural rendering of a modern shopping mall. The top portion shows a multi-level parking garage with a white facade and a dark grey ramp. Several cars are parked on the upper levels, and people are walking on the balconies and walkways. The ground level features a long, white building with a series of arched storefronts. Each archway contains a different retail store. The storefronts are labeled with brand names: ZAAR, EC WARRIOR, G-SATA RWA, PLENER CARIND, PRDAA, ESPTRI, and Christina Doi. The building is surrounded by a paved plaza with many people walking and socializing. There are several palm trees and other greenery scattered throughout the scene. The overall atmosphere is bright and modern.

# LIFESTYLE *MEETS* EVERYDAY CONVENIENCE



# SITE PLAN

***BIRD'S  
EYE  
VIEW***



GREEN PARK AREAS

SECURITY CHECKPOINT

RESIDENTIAL PLOTS

COMMERCIAL UNIT - I



COMMERCIAL UNIT - II

FOOD COURT

FOUNTAIN

# PRIME COMMERCIAL OUTLETS

*Location Advantages:* Opposite Kashish Club,  
Pakhawal Road, Lalton Kalan, Ludhiana

**1 MIN.** – DeMart – Groceries Store

**2 MIN.** – BCM School Basant City

**3 MIN.** – Maa Baglamukhi Dham Mandir

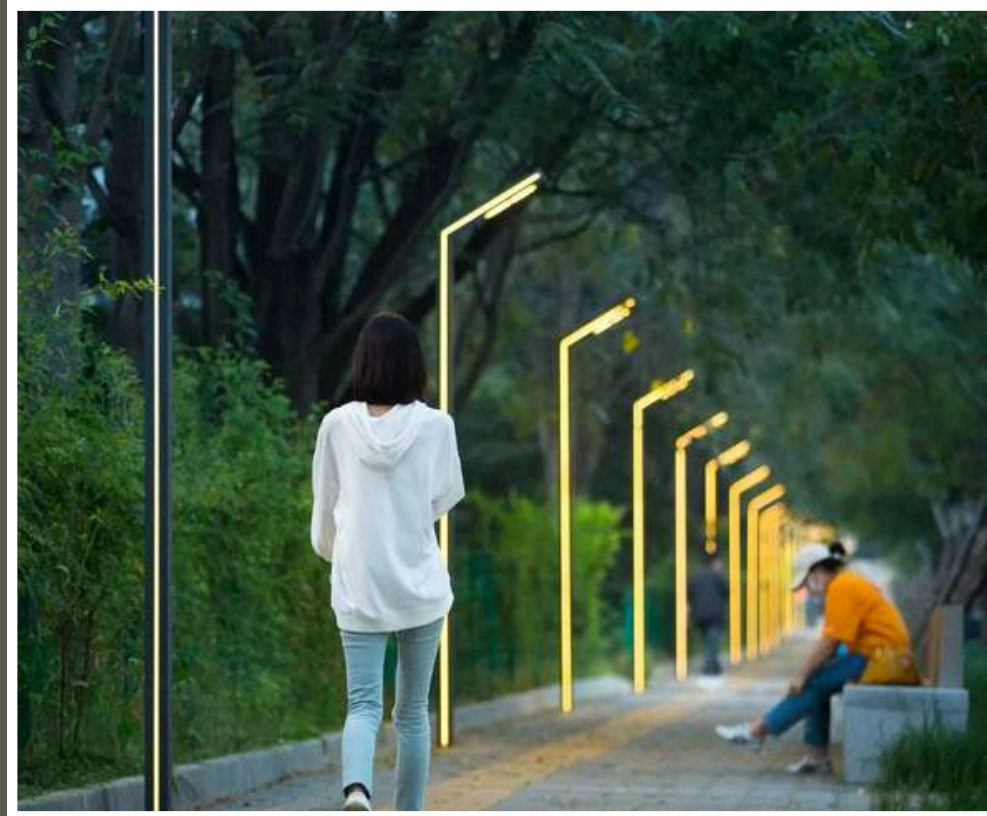
**3 MIN.** – Shri Neelkanth Mahadev Temple

**4 MIN.** – Krishna Balram Gaushala

**5 MIN.** – Manav Rachna International School



# MODERN INFRASTRUCTURE AND SMART CONSTRUCTION



## UNDERGROUND WIRING USING ELECTRIC POLE

*for a clean and obstruction-free skyline*



## WIDE INTERLOCK TILES ROADS WITH STREET LIGHTS

*with proper levelling and safety measures*



## HIGH-QUALITY PAVING AND LANDSCAPING

*for seamless integration of green and built spaces*

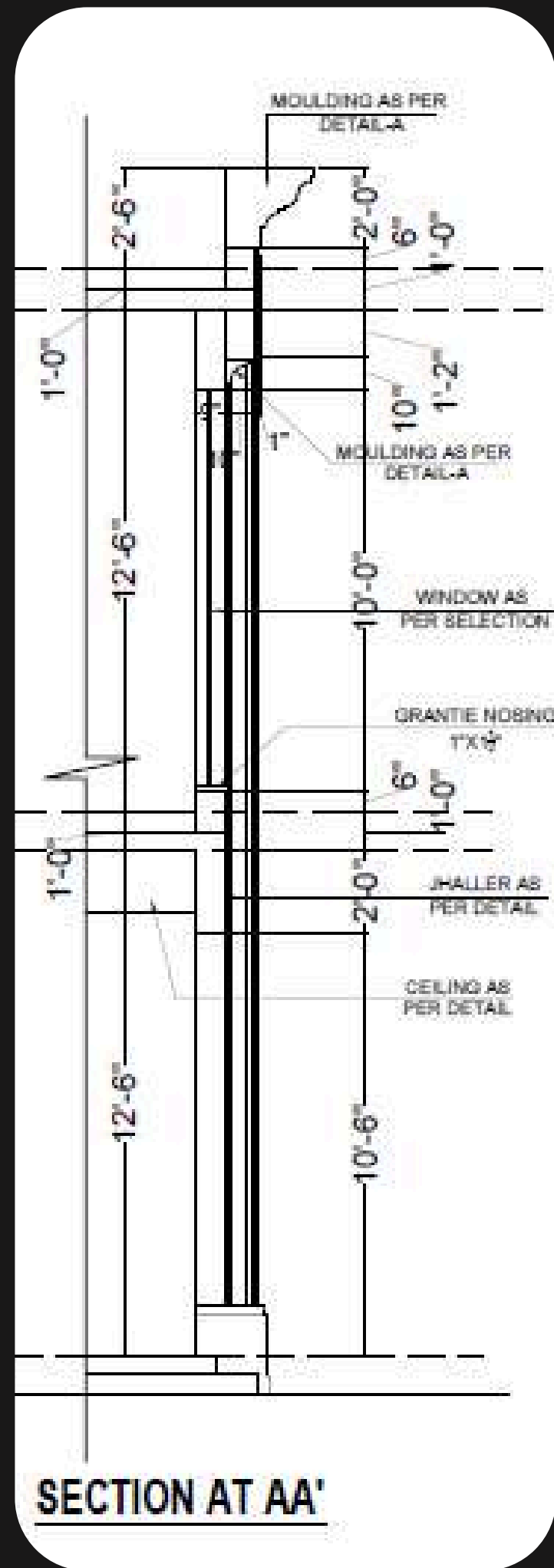
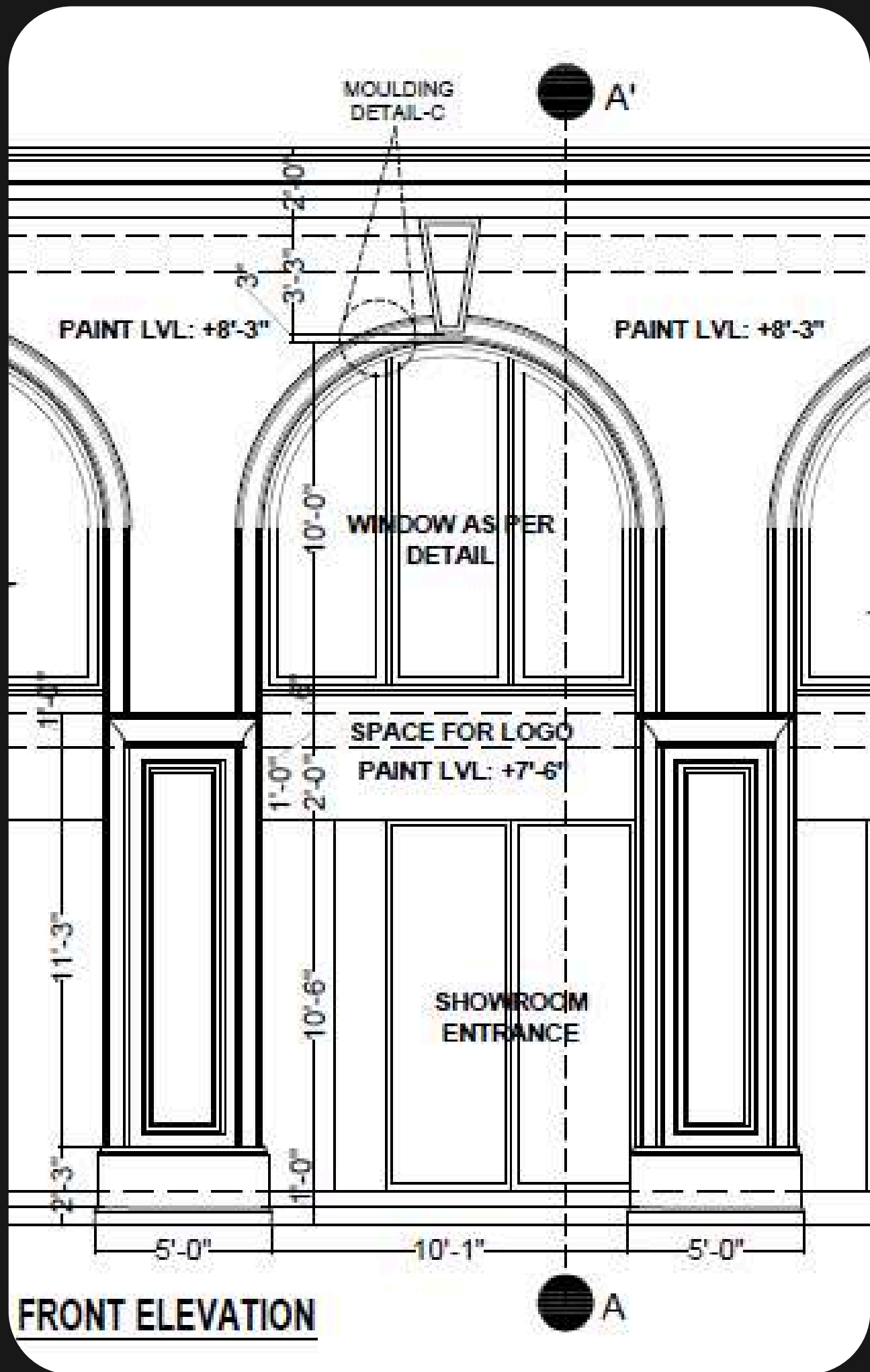




# 22 S.C.Os



From boutique stores and fashion outlets to cozy cafés and convenience shops — this plaza brings together everything residents need within walking distance.



# Façade that speaks *LUXURY*

EUROPEAN-INSPIRED ELEVATION — A PERFECT BLEND OF ELEGANCE AND FUNCTIONALITY

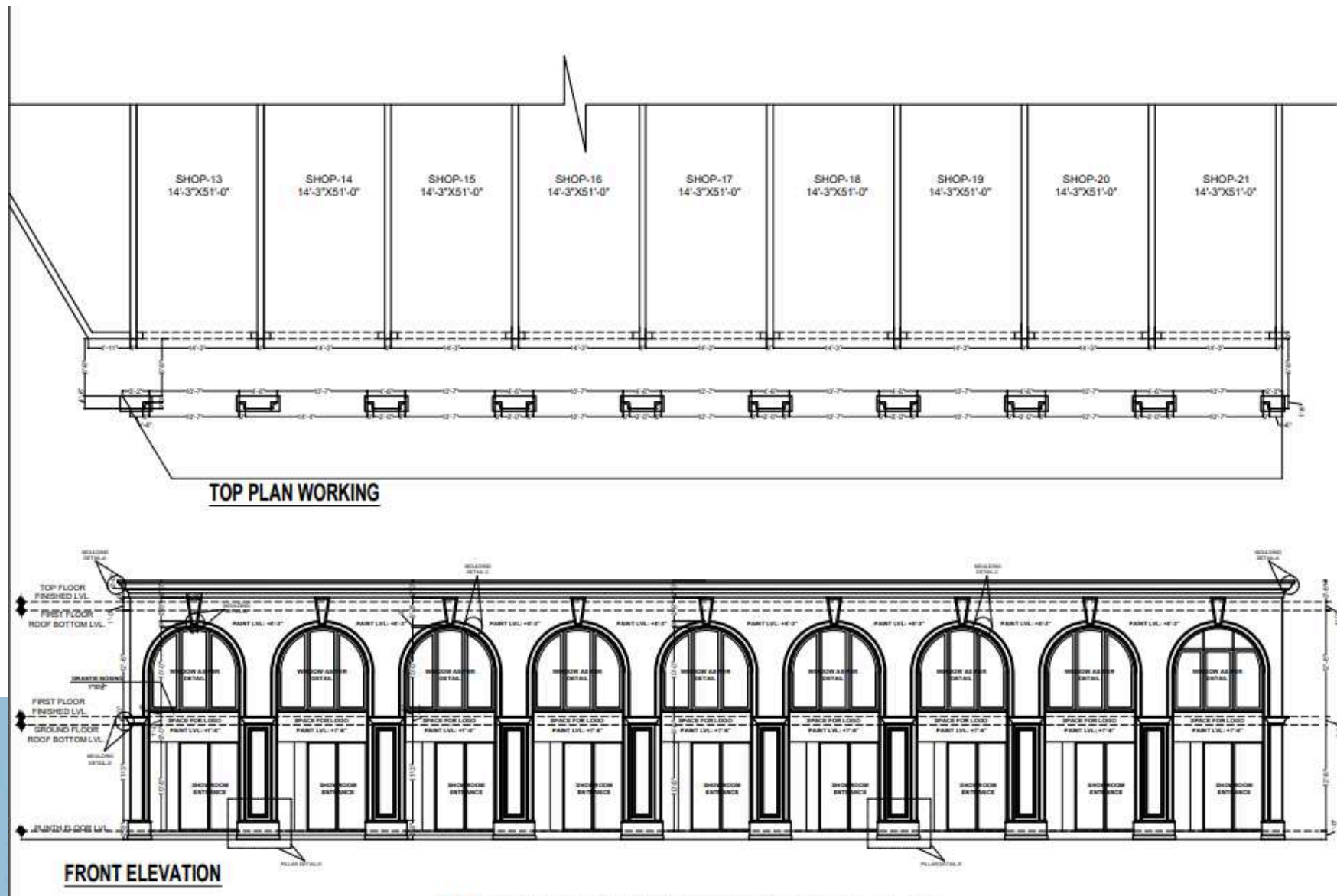


PANCHVATI AVENUE

GREENFIELD DEVELOPERS

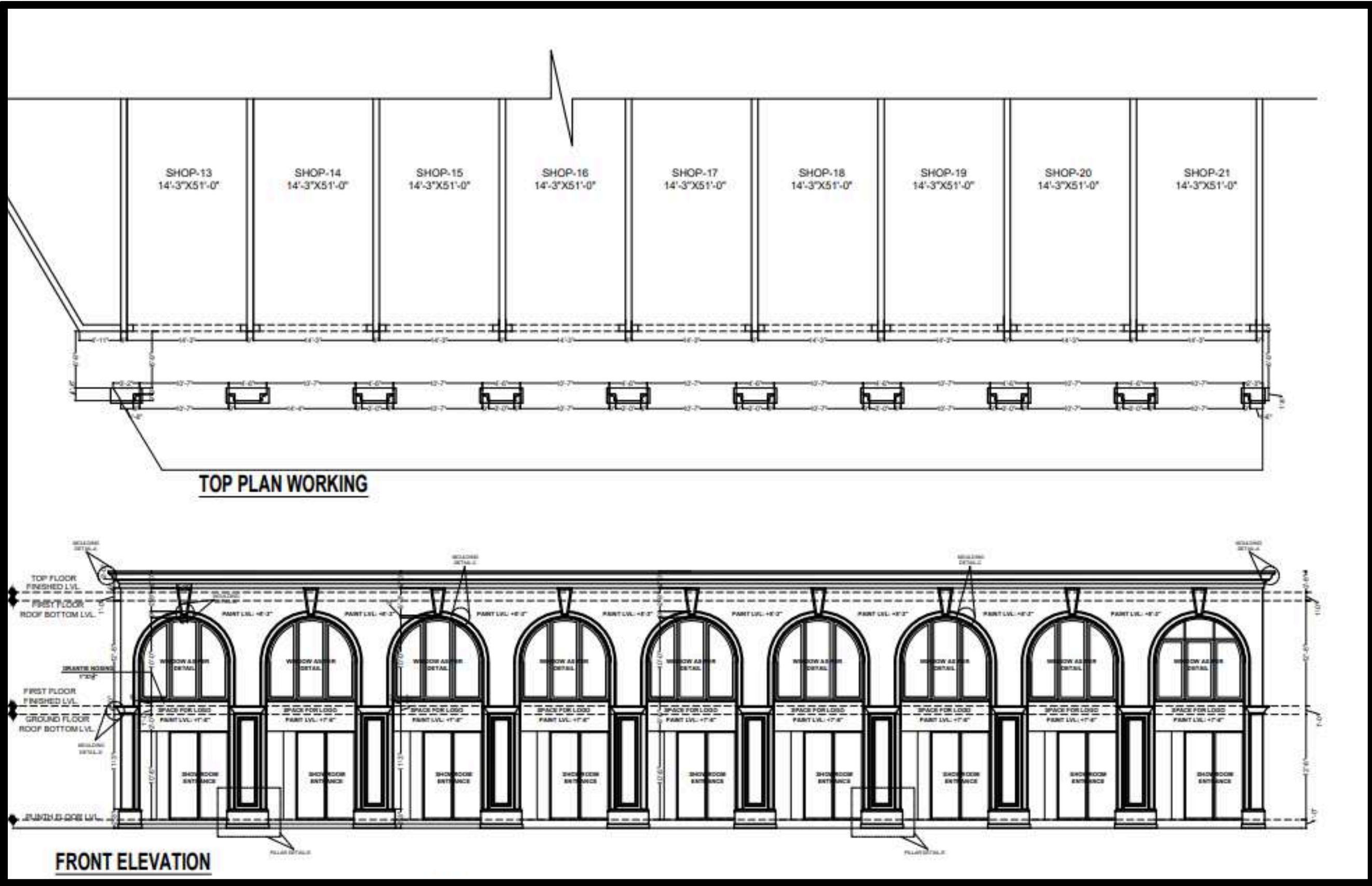
# European-Inspired High-Street Commercial Frontage

The project features an exclusive stretch of high-street commercial units designed with European-inspired elevation — a perfect blend of elegance and functionality.





ARCHITECTURAL  
PRECISION



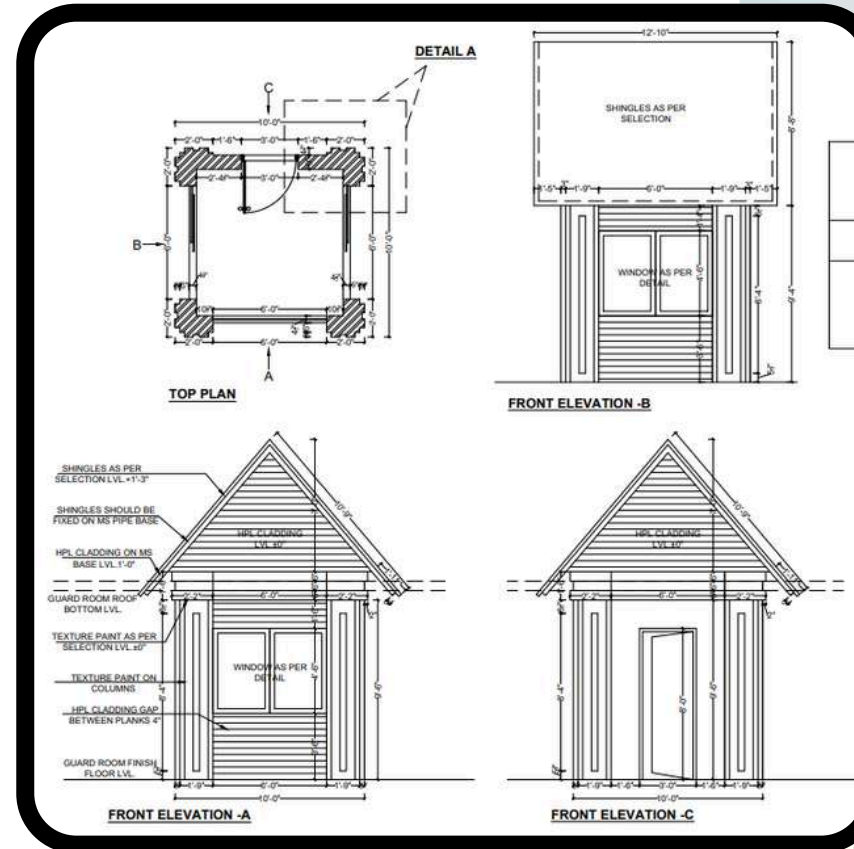
**SECURITY CHECKPOINT**



# 24x7 SECURITY SURVEILLANCE: ENSURING COMPLETE SAFETY AND PEACE OF MIND



 Dedicated ENTRY  
and EXIT points



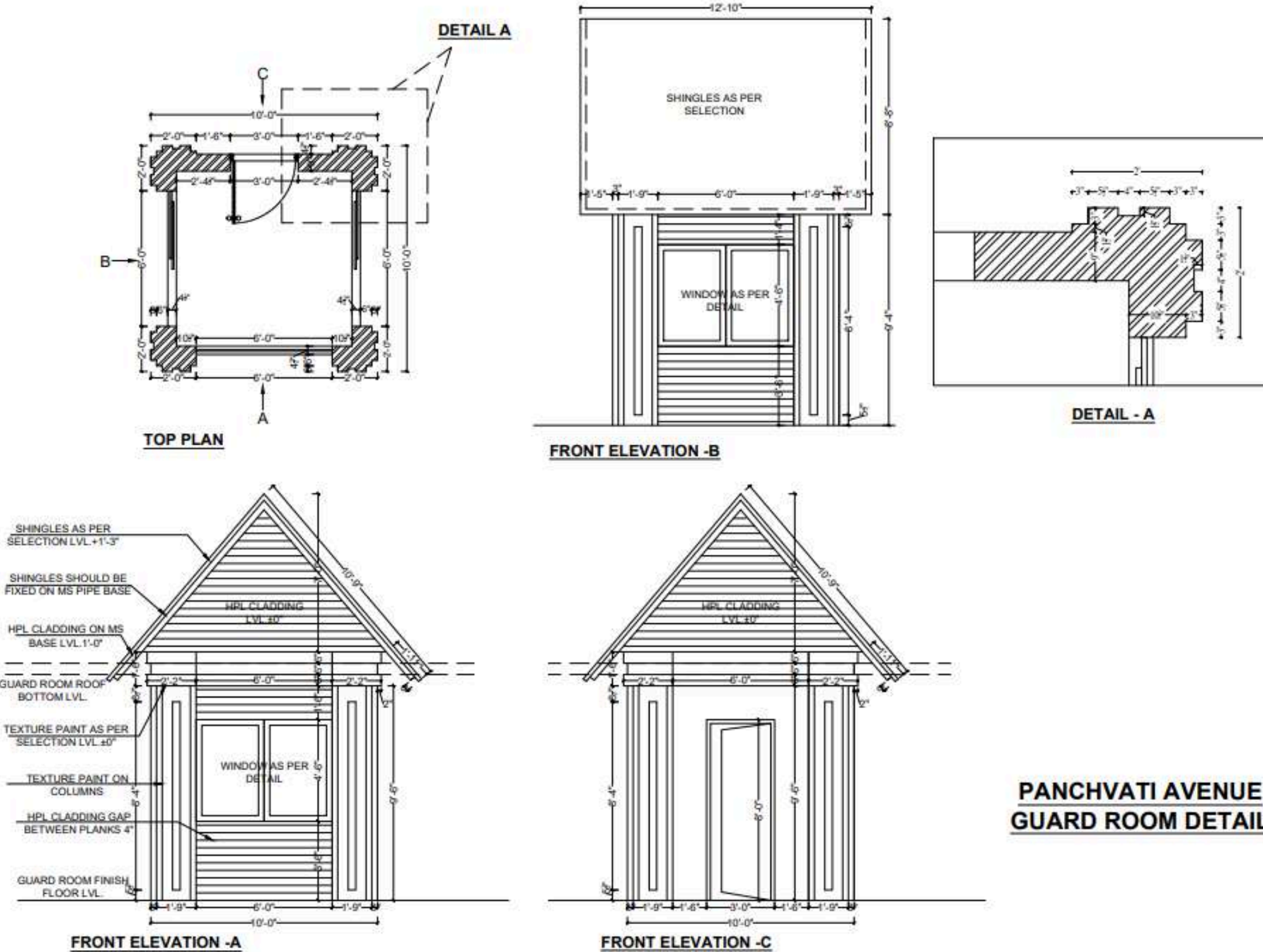
24 X 7  
CCTV Surveillance





# 24 X 7 CCTV SURVEILLIANCE AT ENTRY GATE

# ARCHITECTURAL PRECISION IN EVERY DETAIL



The security guard room at the entrance of Panchvati Avenue has been designed with technical precision and functional clarity.

This drawing represents the exact spatial planning that ensures:

- Controlled entry and exit for residents and visitors
- Optimal visibility for security personnel
- Seamless integration with the township's grand entrance design

Every inch of this space has been planned for efficiency, safety, and aesthetics — reflecting our commitment to thoughtful, detail-driven development.

# STRIKING SCULPTURAL FOUNTAIN LANDMARK

A striking sculptural fountain forms the focal point of the entrance, enhancing the aesthetic grandeur of the development. Designed as an artistic landmark, it creates an elegant sense of arrival while seamlessly integrating with the overall landscape theme.



# FOOD COURT

*WITH DRIVE-THROUGH  
CONVENIENCE*



*A thoughtfully planned food court positioned at the township's front — designed to become a vibrant social and commercial hub..*



Lush Green Parks and  
Landscaped Open Spaces

# Designed for HARMONY and HUMAN CONNECTION





# Aesthetic *Gazebo* — The Centrepiece of Green Living

***Real Time  
On Site  
Images***



• EXCAVATION PROCESS

*Real Time  
On Site  
Images*





# *SITE SURVEY*